

Loyalty on Blockchain

Aydın TÜRKDOĞAN
Oğuzhan YALÇIN
Özkan DÜLGER

AMADEUS ISTANBUL R&D



Agenda

1. About Amadeus
2. What is a Loyalty System?
3. What are the problems?
4. How to solve these problems?
5. Implementation details & small demo
6. Q&A



Amadeus

Corporate Overview

Amadeus serves the entire travel industry



Amadeus at a glance



We shape the future of travel

Amadeus IT Services Turkey



— 2013

- Amadeus moved to airline loyalty programs market and completed the acquisition of [Hitit Loyalty](#), the customer relationship management (CRM) division of [Hitit Computer Services](#), a provider of passenger service systems.

— 2015

- Hitit Loyalty's operations were integrated to Amadeus' Airline IT business and together with the R&D, team in Istanbul grow to 130 from 40 employees.

— 2016

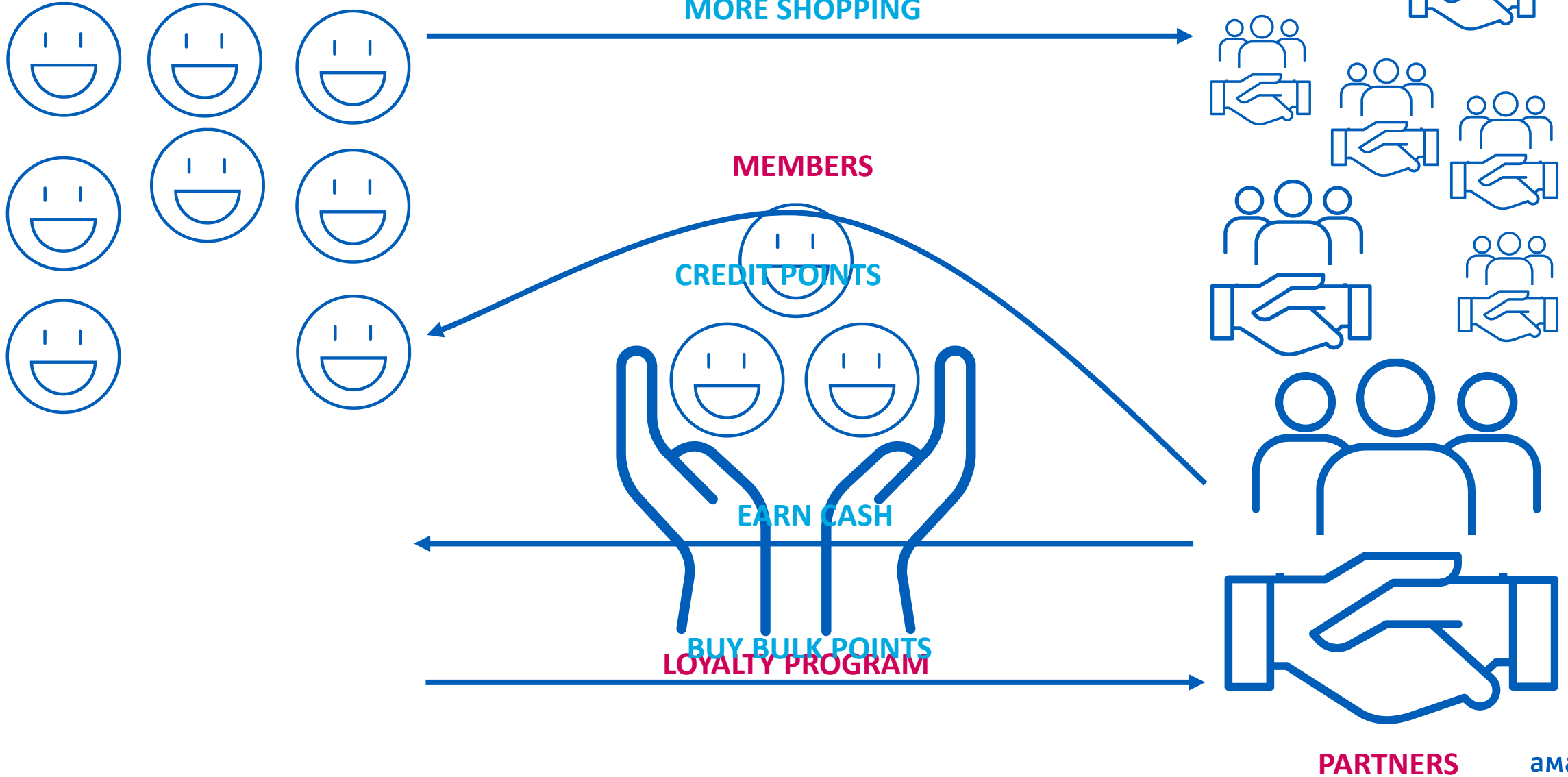
- with 200 employees in Istanbul, Amadeus continues its investments in Turkey as one of the 17 R&D sites around the world and 44 worldwide customers managed by Istanbul.



What is Loyalty?

What is Loyalty?

Loyalty in a nutshell



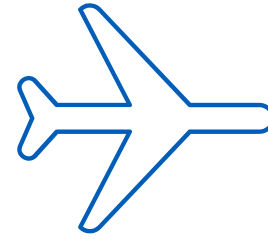
What is Loyalty?

Loyalty Business




What is Loyalty?

Loyalty Business



**Loyalty Program
Owners**

 **Multiple
Currencies**



 **Control Own
Currency**



 **Single
Currency**

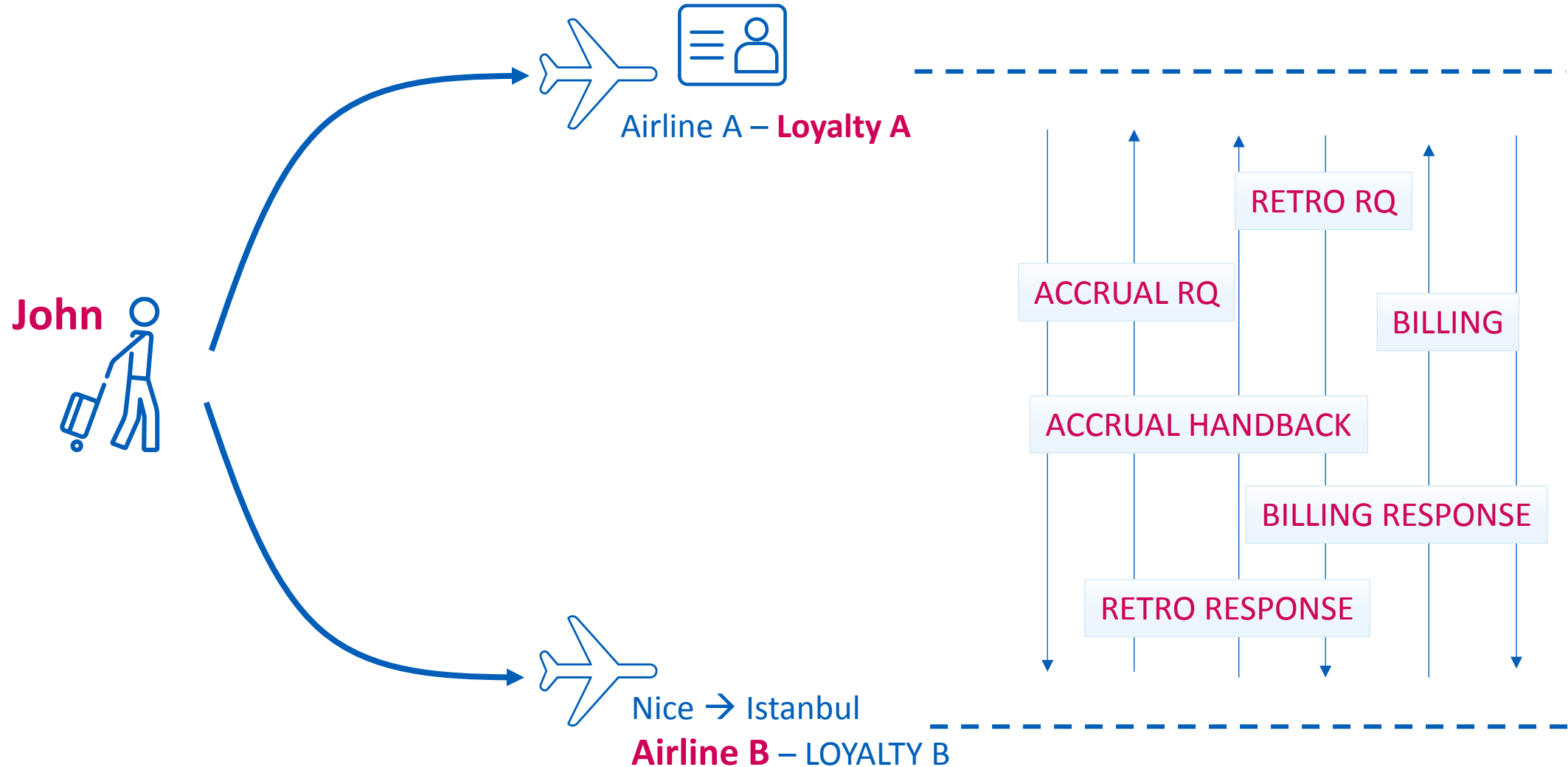


What are the Problems?



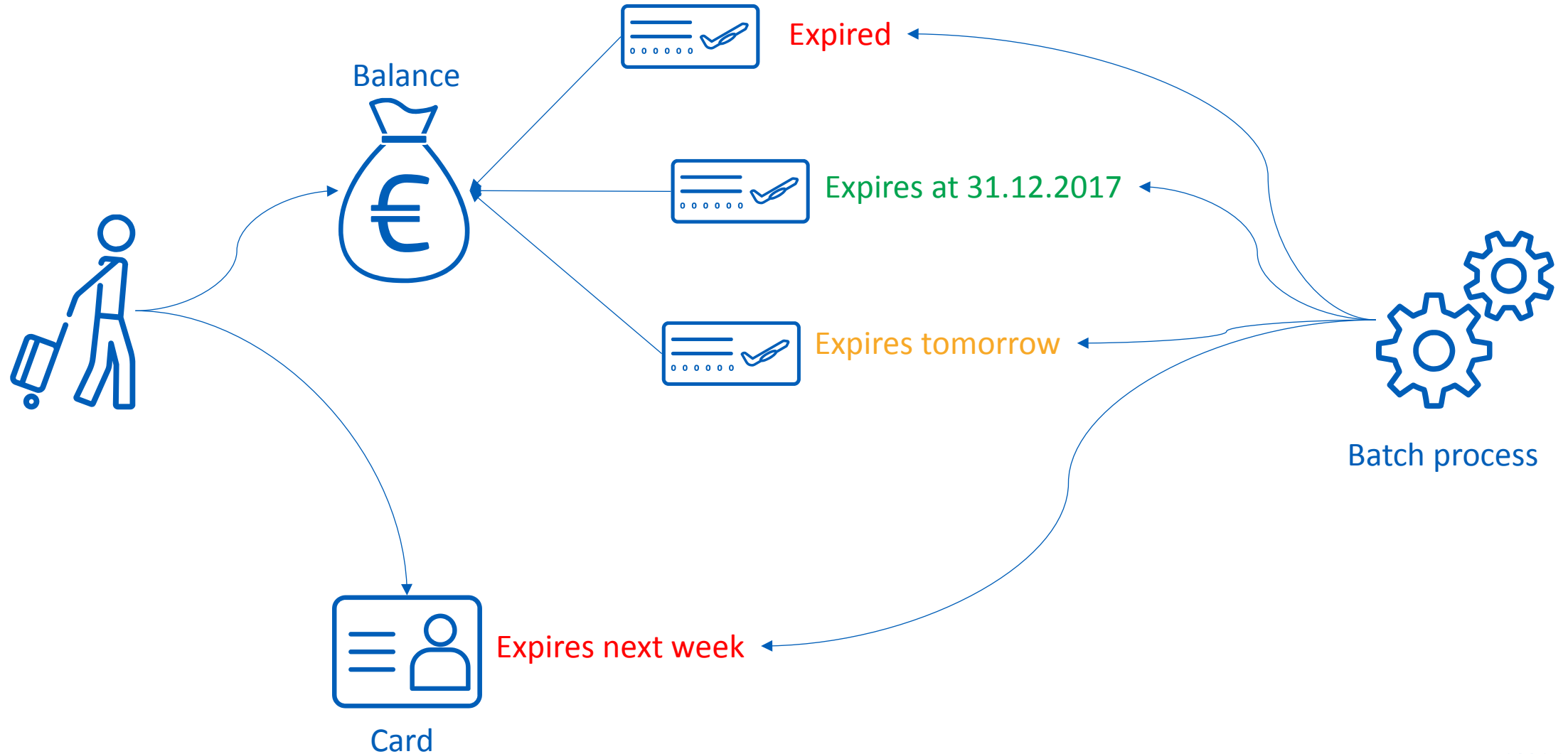
Problems

I - Settlement over file exchanges



Problems

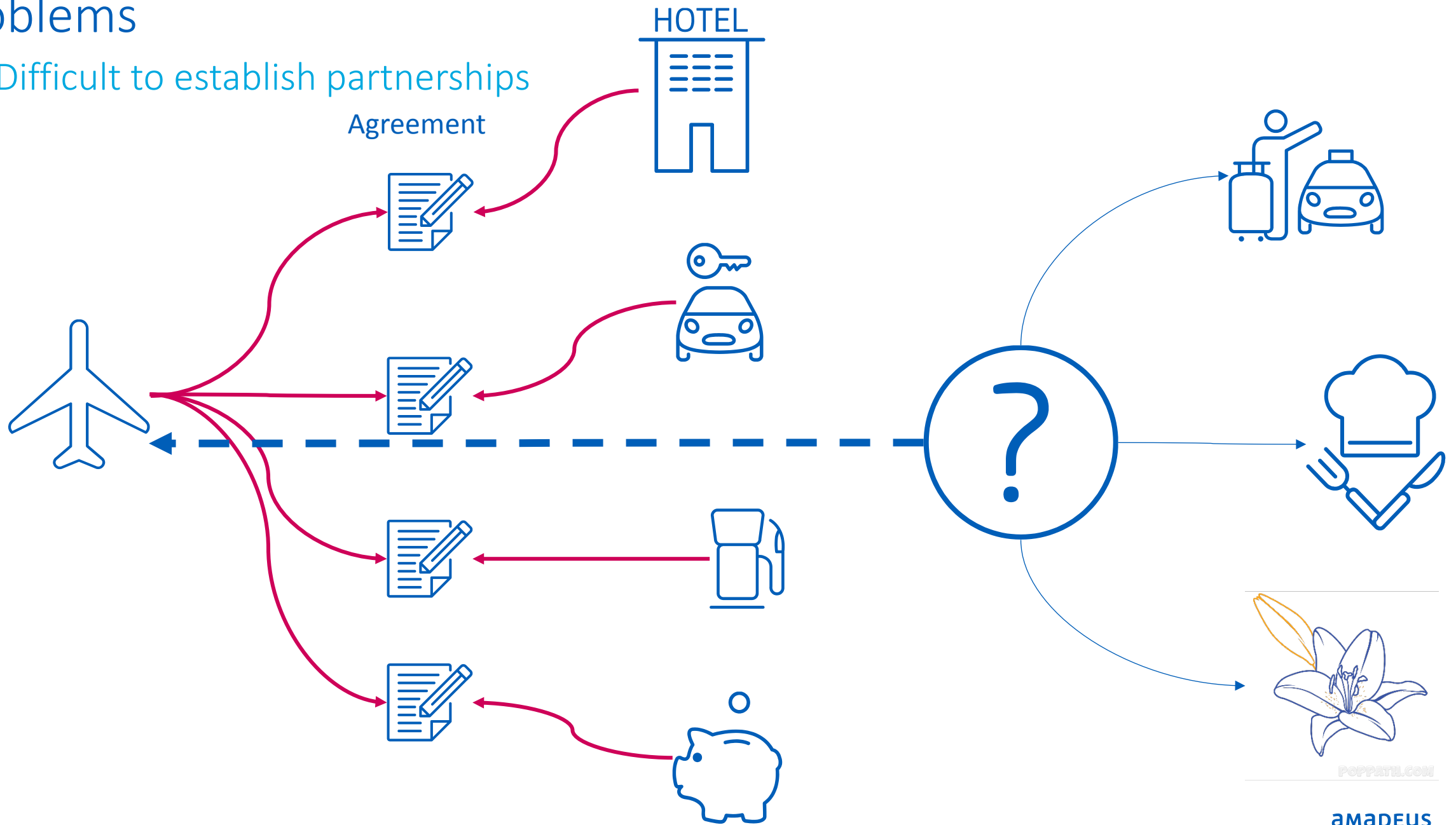
II – Batch Processing



Problems

III - Difficult to establish partnerships

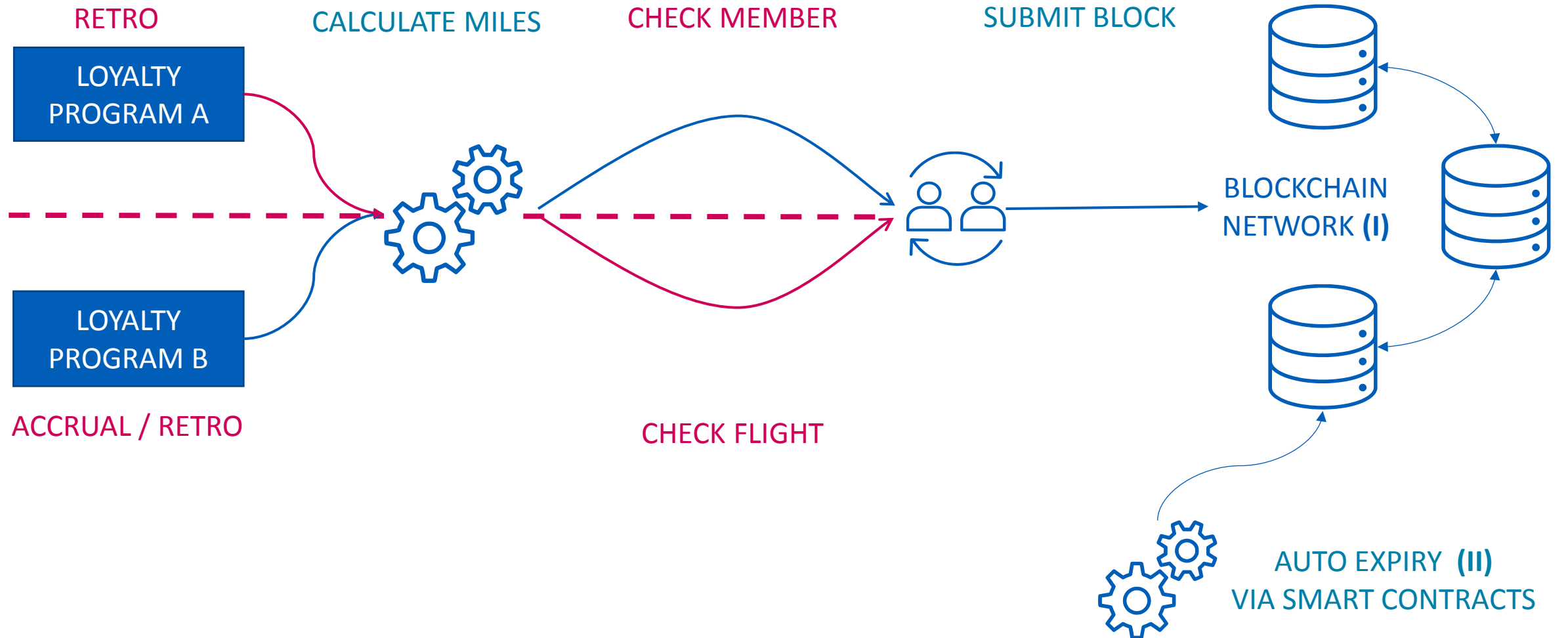
Agreement





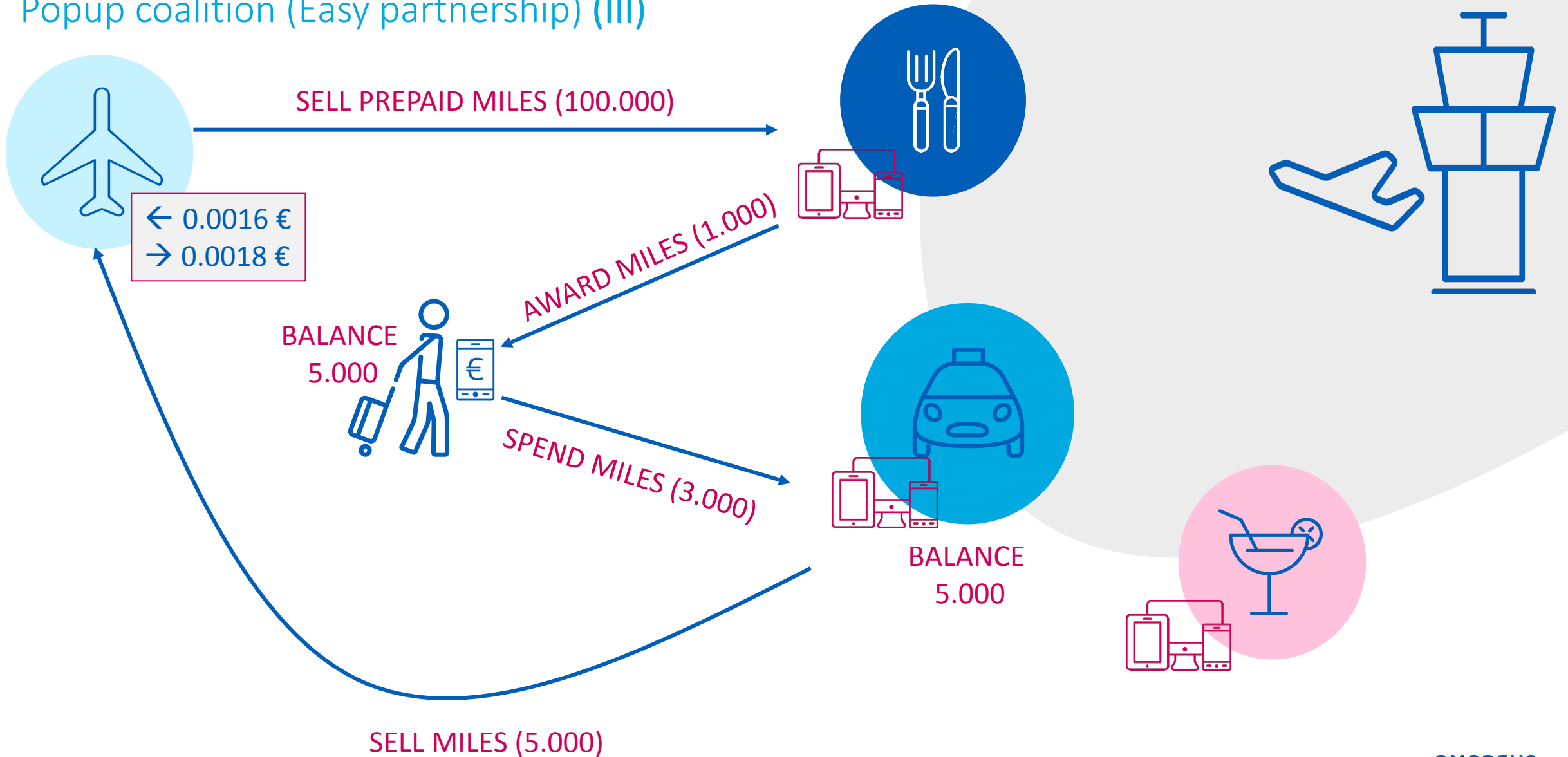
How to Solve the problems?

Loyalty on blockchain



Loyalty on blockchain

Popup coalition (Easy partnership) (III)





Implementation

Which way to go?

Private/Federated or Public Blockchain



Which Platform?

Deciding within the alternatives...

c.rda



Demo



Thank you!

Any Questions?

